

Weddings
EDSON KEITH MANSION
AT PHILLIPPI ESTATE PARK





*Y*our wedding is your most important day, so plan it at the historic Edson Keith Mansion.

This elegant mansion is an indoor-outdoor venue set on the scenic Phillippi Creek and surrounded by a beautiful 60-acre park. Rentals of up to 15 hours are available and include a complimentary wedding rehearsal the day before the ceremony.

Built in 1916, the Edson Keith Mansion features a large foyer, a spacious living room, twin sunrooms with Palladian windows, suites for the bride and

groom on the second floor, a paneled library and gracious dining space, making it an ideal site for wedding ceremonies and receptions.

The terrace overlooks Phillippi Creek, which is bordered by graceful palm trees and moss-draped mature oaks. Ceremonies can either take place inside the mansion or outside on the lawn. There are several choices of outdoor locations for ceremonies to take advantage of the creek and park views.

Rental Conditions

The Edson Keith Mansion is on the National Register of Historic Places so specific rental conditions and guidelines apply to its use. See the Rental Conditions and Guidelines for more information.

Cost

\$750 refundable security deposit is required per event and **20 percent** of the rental fee is due at the time of reservation.

October through May and holidays (up to 15 hours):

- ◆ \$4,200 plus tax for Friday, Saturday and Sunday.
- ◆ \$3,400 plus tax for Tuesday, Wednesday and Thursday.

June through September (up to 15 hours):

- ◆ \$3,400 plus tax any day of the week.



What's Included

- ◆ Access to the entire mansion, including the 85' x 16' terrace and suites for the bride and groom on the second floor, as well as the lawn behind the mansion down to the fishing pier and the rose garden. Additional space to the east of the rose garden is available to rent for an additional fee.
- ◆ Indoor tables and chairs for 120 guests (additional chairs and tables may be brought in by rental companies).
- ◆ Mansion can accommodate 150 guests for a sit-down dinner.
- ◆ A two-hour, outside rehearsal time is included.

Time of Use

9 a.m. to midnight (all music must end by 10 p.m.)

For access to the mansion earlier than 9 a.m. for setup purposes, arrangements must be made with Phillippi Estate Park staff in advance of the event.

Event must be concluded and all cleanup activities completed by midnight.





Caterers

Karl Ehmer's Catering

941-922-3797

Innovative Dining

941-323-1610

Mattison's

941-921-3400

Michael's on East

941-366-0007

Milan Catering

941-312-0000

Modern Events Catering

941-552-9650

Morton's Market

941-955-9856

Nellie's

941-924-2705

Sarasota Catering Company

941-927-7675

Simply Gourmet

941-929-0066

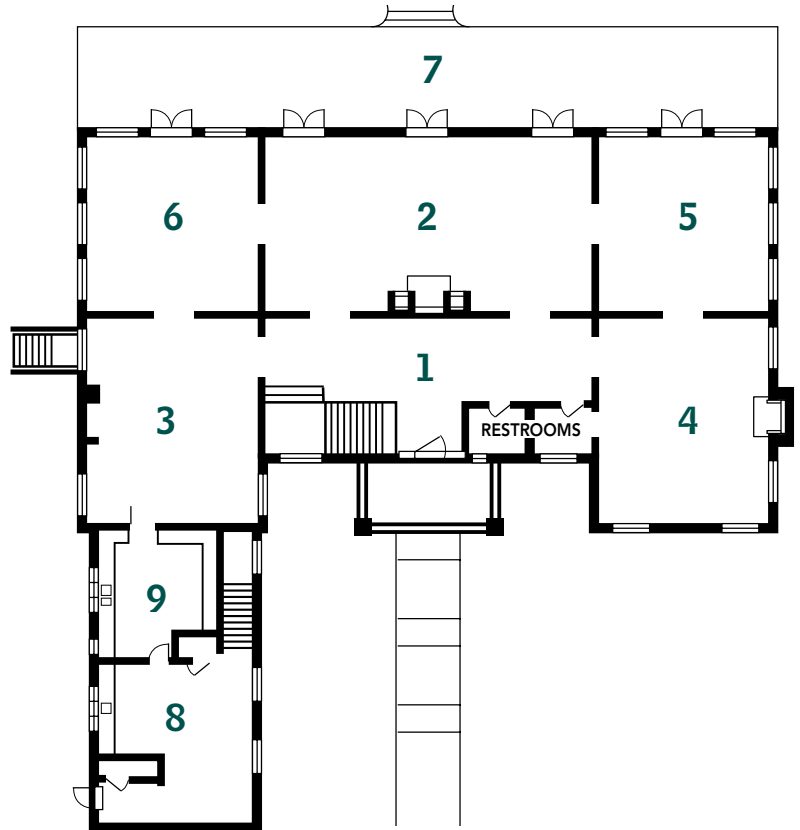




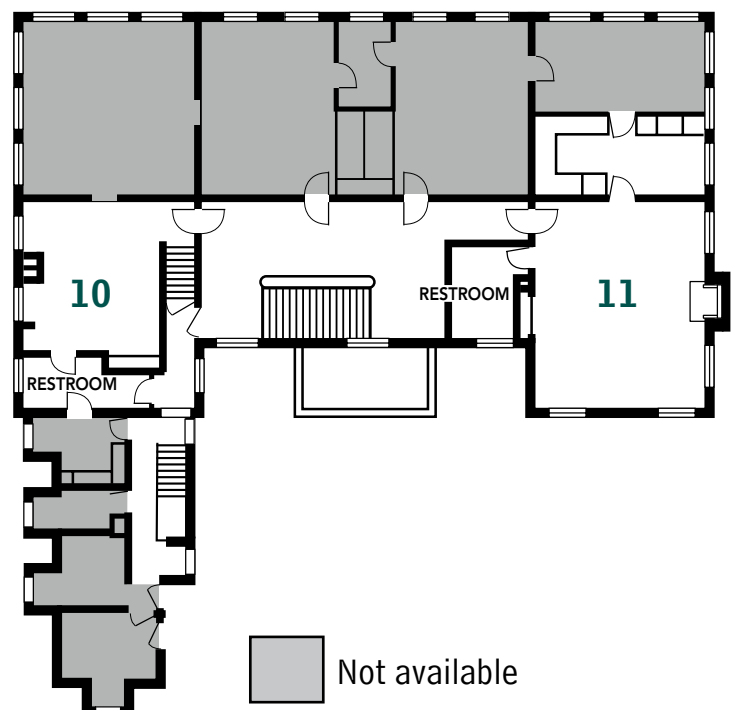
Floor Plan

1. Foyer
2. Living room
3. Dining room
4. Library
5. East sunroom
6. West sunroom
7. Terrace
8. Kitchen
9. Butler's pantry
10. Groom's suite
11. Bride's suite

First Floor



Second Floor



Capacities

Living room

- ◆ Seated: approximately 66 (based on seating at eight 5-foot round tables and one sweetheart table)
- ◆ Standing: maximum capacity 75

East and west sunrooms

- ◆ Seated: approximately 32 (based on seating at four 5-foot roundtables)
- ◆ Standing: maximum capacity 38

Library

- ◆ Seated: approximately 32 (based on seating at four 5-foot roundtables)
- ◆ Standing: maximum capacity 45

Dining room (Used for food service)

- ◆ Standing: maximum capacity 40

Total maximum seated: 150

Total maximum standing: 236

- ◆ Bride's suite: Maximum capacity is 45
- ◆ Groom's suite: Maximum capacity is 16





PHOTOGRAPHY CREDITS:

Imely Photography | imelyphoto.com
page 2 (bottom), page 6 (top right), page 7 (back cover)

Jillian Joseph Photography | jillianjoseph.com
page 1 (inside cover), page 3 (top and bottom), page 4 (top left and right)

Katelyn Prisco Photography | katelynpriscophotography.com
page 4 (bottom right), page 5 (top left), page 6 (bottom)



5500 S. Tamiami Trail, Sarasota, FL 34231

941 861 5000 | scgov.net/phillippiestate

Created by Sarasota County Communications 9.24.18