

The Legacy Trail Extension



The Legacy Trail Extension

- On Nov. 6, 2018, county residents voted to secure funding for the extension of The Legacy Trail into downtown Sarasota and connections to the City of North Port.
- Acquisition of the railroad corridor was completed in late June 2019.
- Trail connections are being planned which will connect the current Legacy Trail to the City of North Port through east Venice.



The Legacy Trail Extension

- Kimley-Horn and Associates has been hired as the Design/Engineering firm.
- Jon F. Swift Construction has been hired as the Construction Management firm.
- Design work is ongoing.
- Construction will begin in 2020, with a planned completion of surface level improvements by the end of 2022.
- Overpasses at Clark and Bee Ridge roads in Sarasota will be completed by FDOT.

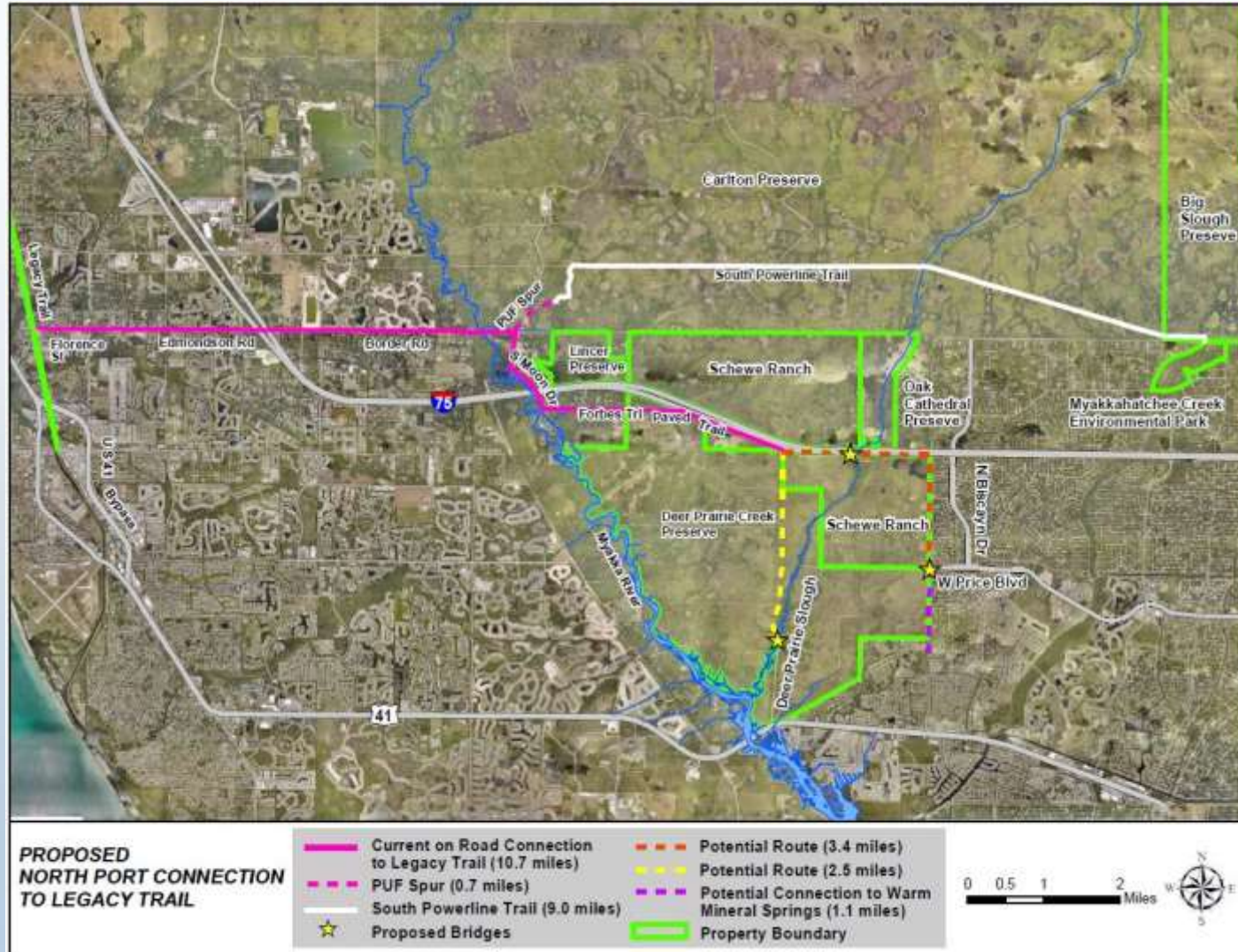


The Legacy Trail Extension

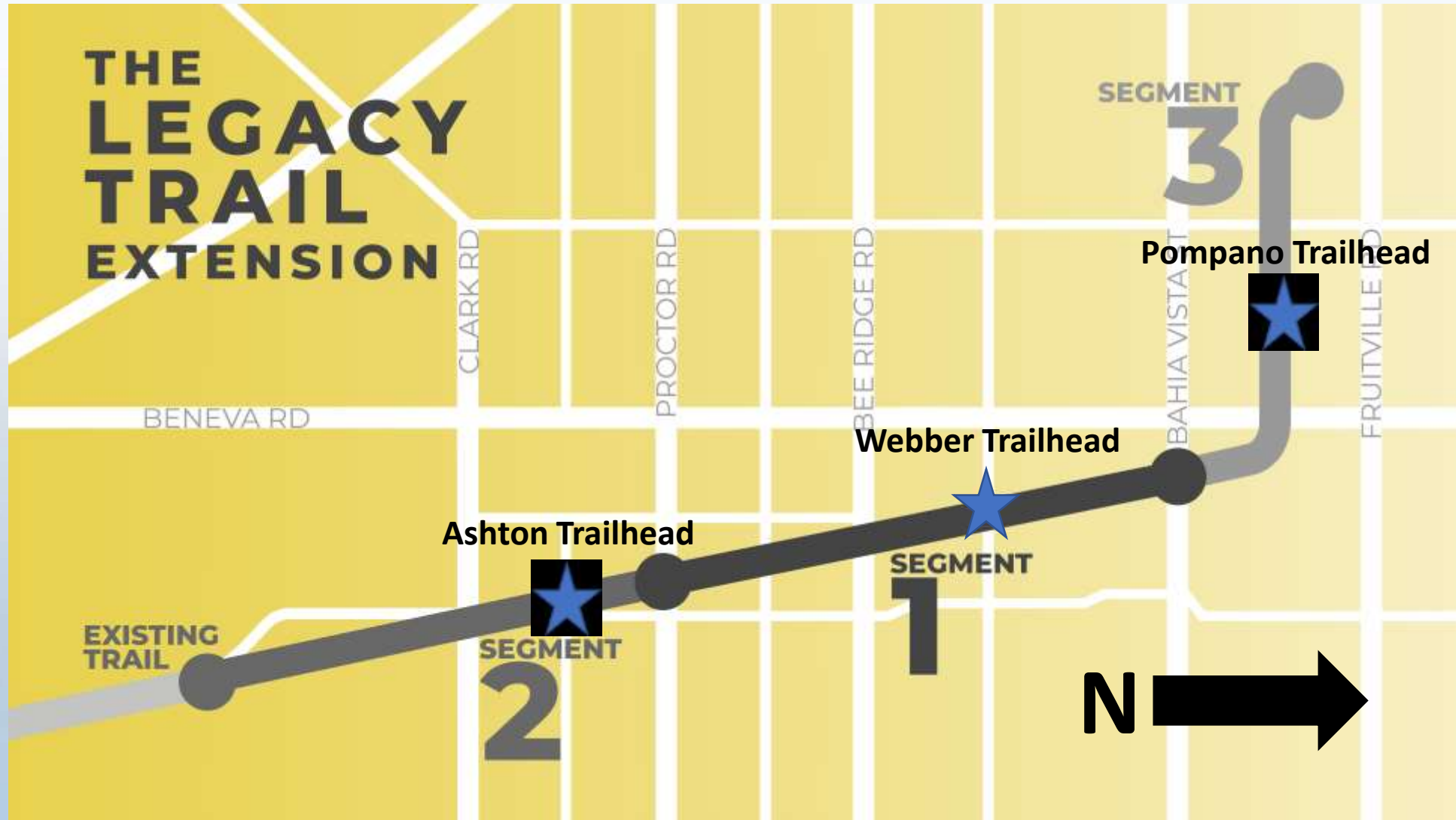
The extension of the Legacy Trail will:

- Create nearly 30 miles of continuous non-motorized paved multi-use trail, which could become a regional connection between Manatee, Sarasota, DeSoto and Charlotte counties.
- Provide access to local neighborhoods and place 27 schools within one linear mile of the Legacy Trail; another 45 would be within two linear miles.
- Enhance connectivity from the City of North Port through Venice to downtown Sarasota.

The North Port Connector



The Legacy Trail Extension



Next Steps

- Kimley-Horn will be working towards design, engineering and construction documents for The Legacy Trail Extension.
- Construction is scheduled to begin in 2020.
- Completion is anticipated in 2022.

Public Input Breakout

- Community Input - Dot Exercises
 - Playgrounds/Exercise Equipment
 - Amenities
 - Shelters
 - Hardscape
- Staff Tables for Questions
 - Parks, Recreation and Natural Resources
 - Capital Projects
 - Neighborhood Services
 - Transportation
 - Stormwater
 - Public Utilities