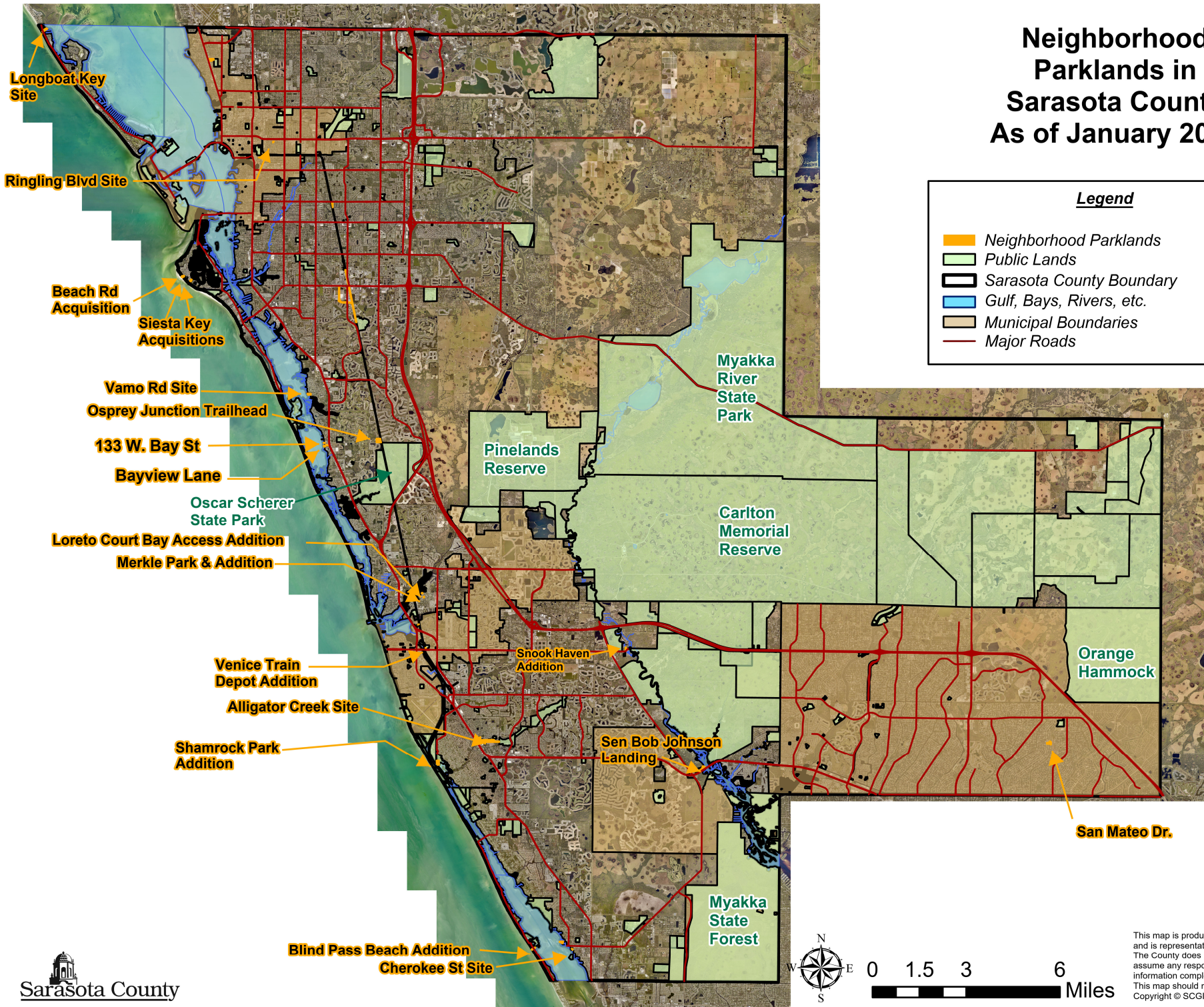


Neighborhood Parklands in Sarasota County As of January 2024

Legend

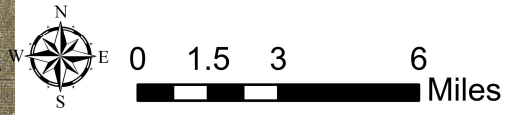
-  Neighborhood Parklands
-  Public Lands
-  Sarasota County Boundary
-  Gulf, Bays, Rivers, etc.
-  Municipal Boundaries
-  Major Roads



- Longboat Key Site
- Ringling Blvd Site
- Beach Rd Acquisition
- Siesta Key Acquisitions
- Vamo Rd Site
- Osprey Junction Trailhead
- 133 W. Bay St
- Bayview Lane
- Oscar Scherer State Park
- Loreto Court Bay Access Addition
- Merkle Park & Addition
- Venice Train Depot Addition
- Alligator Creek Site
- Shamrock Park Addition
- Blind Pass Beach Addition
- Cherokee St Site

- Myakka River State Park
- Pinelands Reserve
- Carlton Memorial Reserve
- Orange Hammock
- Myakka State Forest
- Snook Haven Addition
- Sen Bob Johnson Landing

San Mateo Dr.



This map is produced from Sarasota County GIS, and is representative information only. The County does not warranty, guarantee, or assume any responsibility for geographic information completeness and/or accuracy. This map should not be used as guide for navigation. Copyright © SCGIS 2024

Path: N:\Environmental\Recreation\NeighborhoodParklands\NPPMasterMap\NPPMasterMaps.aprx